

Search TRN...

Turner Radio Network RSS Feed

Stats

Content View Hits : 2906278

Court Order



Pursuant to an ORDER dated December 10, 2010 by federal judge Donald E. Walter, sitting at the United States District Court for the Eastern District of New York in Brooklyn, the former owner of this web site, radio host Hal Turner, divested himself of ownership and control of this - and all other - internet web sites. Mr. Turner is barred by court order from owning or contributing to the content of web sites until October, 2015. As such, Hal Turner has nothing to do with the ownership, operation or content of this web site.

*** UPDATED Feb. 5 *** INDICATIONS OF SEVERE EARTHQUAKE / ERUPTION AT YELLOWSTONE NATIONAL PARK

Sunday, 02 February 2014 05:06

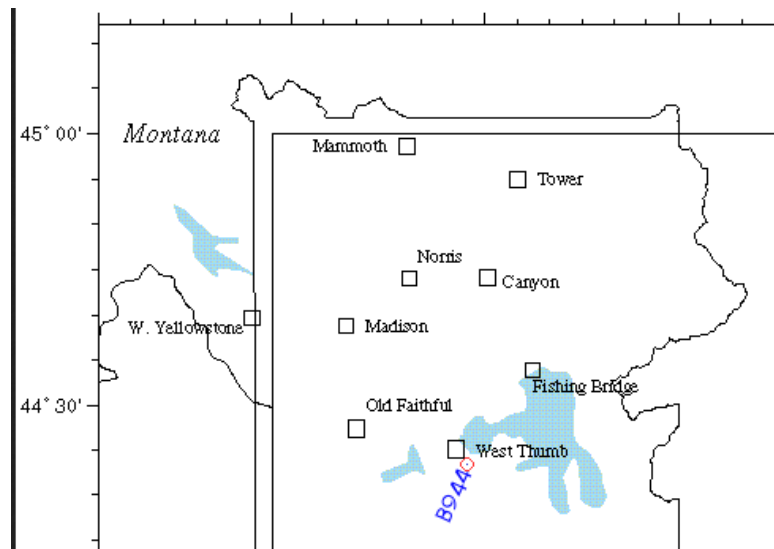
***** This story is UPDATED as of Feb 5 with a Statement issued by the US Geological Survey, shown at bottom *****

February 2, 2014 – (TRN) – A seismometer inside a borehole at Yellowstone National Park has begun reporting staggering underground activity near the southwest corner of Yellowstone Lake, possibly signaling the beginning of an eruption of the Super Volcano at the Yellowstone National Park. TRN has obtained the image of the Seismograph report and now YOU can see it for yourself! This could be very nasty... (UPDATED 2-3-2014 9:00 AM)

Yellowstone lake is pretty much the center of what is the Yellowstone Caldera; the mouth of a massive Super Volcano, located beneath the park.

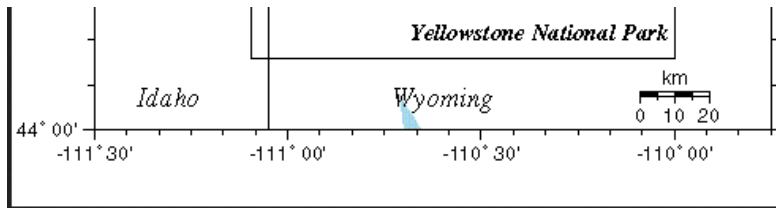
The activity began around 12:00 Noon, Mountain Standard Time (MST) on February 1, and was detected by a seismometer in Borehole B944 then continued, non-stop, all day yesterday getting worse and worse as the hours wore on. The activity is continuing right now at 6:06 EST AM as this news article is being produced.

The map below shows the location of Borehole B944 in relation to Yellowstone Lake and the rest of the park.



Most Popular Stories

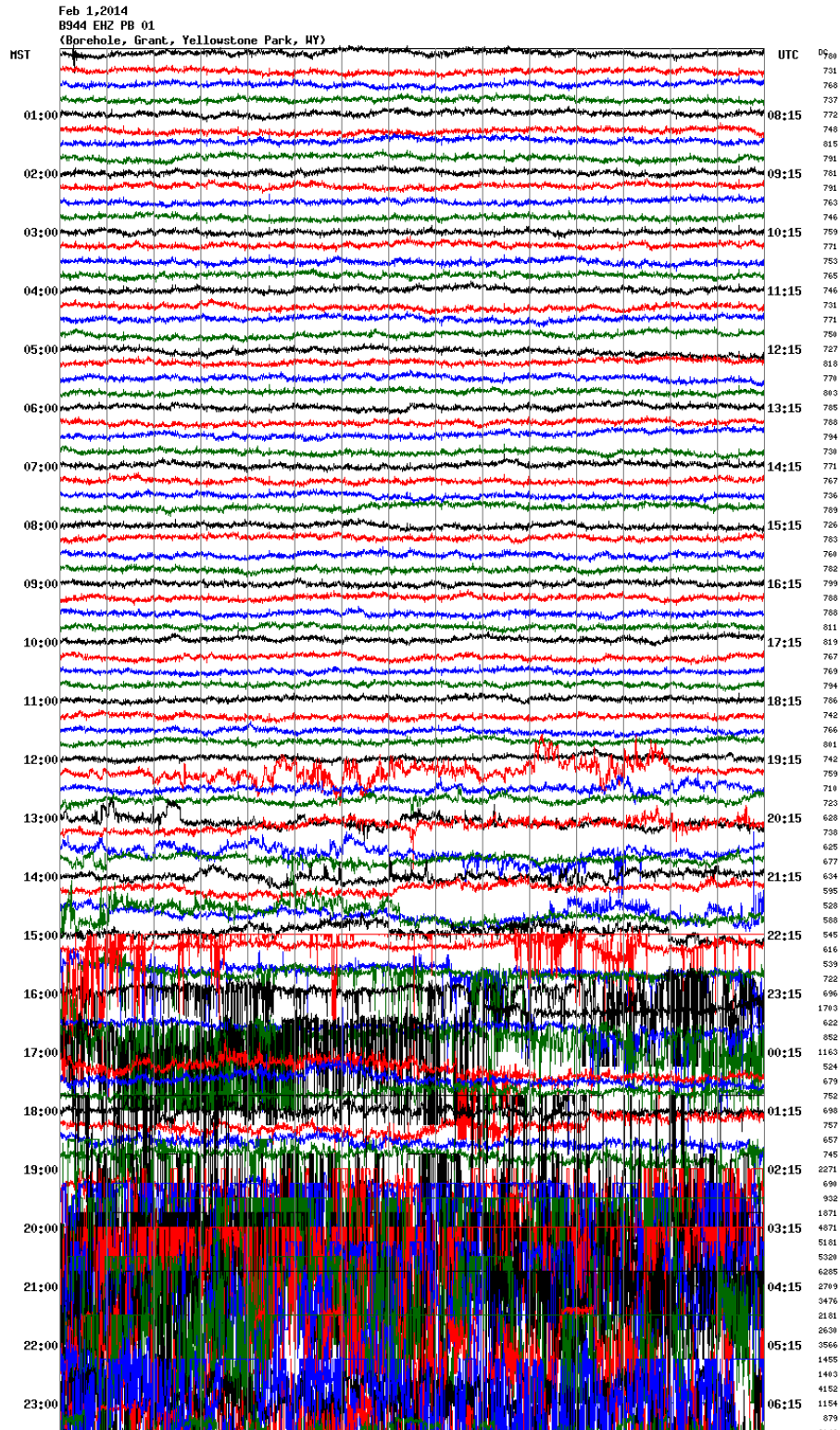
- VISUALLY CONFIRMED: Enormous Radiation Detected on Moon
- RADIATION EFFECTS II: U.S. FROM JAPAN NUCLEAR ACCIDENT
- SURPRISE! You're Eating Fukushima Radiation a Bloody, Cancerous Tumors in Fukushima Contaminated By Radiation
- ** NEWS FLASH - URGENT! STEAM SUDDENLY EMANATING FROM FUKUSHIMA REACTOR WEST COAST OF NORTH AMERICA SHOULD BE PREPARED FOR POSSIBLE RADIATION CLOUD WITHIN 3 TO 5 DAYS
- 51 Sailors from USS Ronald Reagan Suffering From Cancer, Leukemia, Tumors After Participating in Fukushima Nuclear Recovery Efforts
- *** UPDATE Feb. 5 *** INDICATIONS OF SEVERE EARTHQUAKE / ERUPTION AT YELLOWSTONE NATIONAL PARK
- MONSTROUS EARTHQUAKE TO HIT OHIO
- RADIATION REACHES U.S.A. FROM JAPAN NUCLEAR DISASTER
- BOMB SHELL! Snowden downloaded entire roster of U.S. government - all names and home addresses



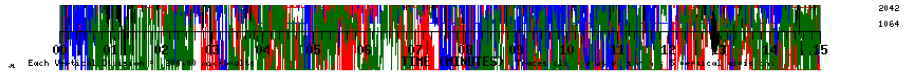
The readings being reported from seismometer inside Bore Hole #B944 are literally "off-the-scale." Is an earthquake brewing, or is this the beginning of a catastrophic eruption of the Yellowstone "Super Volcano?"

Seismographic Printout from Yellowstone National Park, Bore Hole #B944, for February 1, 2014. The time stamp goes down the left edge. Look at what starts happening from 12:00 Noon for the rest of the day. By 3:00 PMMST, things get real dicey; by 5:00, it is clear there's real trouble happening underground. By 7:00 PM, the seismographic gear is totally overwhelmed; with all readings going utterly off the scale. This could be a sign that a massive eruption of the Yellowstone Super Volcano has begun deep underground.

CLICK IMAGE TWICE TO VIEW FULL SIZE



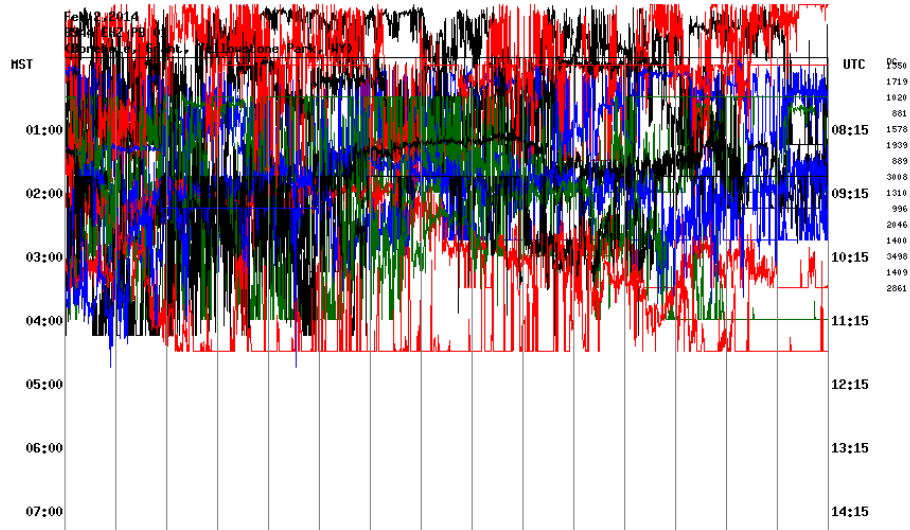
other perso
info of **all'
officials and
gov't emplo
- including
enforcemer
plus banke
corporate
boards of
directors ar
more!
• PROFESS
GIVES
COORDIN/
OF PLANE
INBOUND
TOWARD
EARTH !



A second printout shows the activity continuing to this very moment, so severely that the seismometer printer is **RUNNING OUT OF BLUE, BLACK AND GREEN INK!**

Here is the activity from Midnight MST to 4:30 AM, MST (5:30 AM EST)

CLICK IMAGE TWICE TO VIEW FULL SIZE



PERSPECTIVE ON THE ENORMITY OF YELLOWSTONE

To help readers understand the implications of what is taking place, we first show the enormity of Yellowstone National "PARK" with stats from the US [National Park Service](#):

- Yellowstone was the world's first National Park
- A designated World Heritage Site and designated Biosphere Reserve
- 3,472 square miles or 8,987 square km
- 2,221,766 acres or 898,317 hectares
- 63 air miles north to south (102 km)
- 54 air miles east to west 87 km)
- 96 % in Wyoming
- 3 % in Montana
- 1 % in Idaho
- Highest Point: 11,358 ft / 3,462 m (Eagle Peak)
- Lowest Point: 5,282 ft / 1,610 m (Reese Creek)
- **Larger than Rhode Island and Delaware combined**
- **About one-quarter the size of Switzerland and about 65% the size of Montenegro**
- Approximately 5% of park is covered by water; 15% is grassland; and 80% is forest
- Precipitation ranges from 10 inches (26 cm) at the north boundary to 80 inches (205 cm) in the southwest corner
- Temperatures (average) at Mammoth: January: 9° F/-13 C in July: 80° F/27 C
- Records:
 - High: 99°F/37 C, 2002 (Mammoth)
 - Low Temp: -66° F/-54 C (West Entrance, Riverside Station 1933)

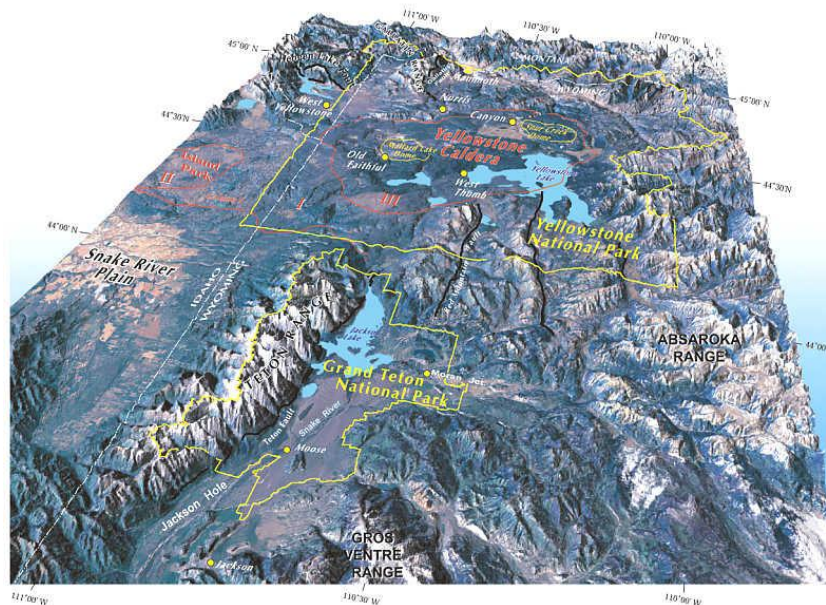
Here's a map of Yellowstone:





Map shows locations, mileage, towns, roads, and lakes.

Here is a Topographical map showing the mouth ("Caldera") of the Super Volcano and the scarred, treacherous terrain, created by past eruptions. (Click Image to enlarge). The park boundaries are the thin Yellow line, the Caldera of the super volcano is shown by the thin Red line. Bear in mind that seismometer B944 is just next to the area labeled "West Thumb" on the map, showing the western edge of Yellowstone Lake. That puts this seismic activity right smack in the active zone of the actual caldera.



A satellite image provided by the British Broadcasting Corporation (BBC) *** THEORIZED ***

A recent program aired by the British Broadcasting Corporation (BBC) *** THEORIZED *** what an eruption of Yellowstone would affect. Below is the *** THEORETICAL *** blast, damage and volcanic ash fallout area, which is shown in various shades of Orange.

(This image does NOT reflect an ongoing eruption – it is not real)



If this is the start of an eruption at Yellowstone, the entire northwest quadrant of the country could be affected by damage and disruption beyond human comprehension.

We will monitor this story closely.

UPDATE Feb. 2, 2014 11:26 PM EST

According to the U.S. Geological Survey (USGS) twenty (20) earthquakes in the area of Yellowstone preceded this strange seismometer readings. Those minor earthquakes are listed as follows:

17 earthquakes in map area

y/m/d h:m:s deg deg km

1.9 2014/01/31 09:55:29 44.798N 110.540W 4.4 30 km (18 mi) SSE of Gardiner, MT
 1.1 2014/01/31 07:35:32 44.578N 111.145W 9.2 10 km (6 mi) SSW of West Yellowstone, MT
 1.7 2014/01/31 06:25:39 44.834N 110.536W 6.9 26 km (16 mi) SSE of Gardiner, MT
 1.2 2014/01/30 21:16:01 44.718N 111.203W 10.7 10 km (6 mi) NW of West Yellowstone, MT
 1.9 2014/01/30 17:21:11 44.815N 110.532W 3.9 28 km (18 mi) SSE of Gardiner, MT
 1.8 2014/01/30 15:02:27 44.807N 110.525W 6.9 30 km (18 mi) SSE of Gardiner, MT
 1.8 2014/01/30 11:43:19 44.806N 110.540W 2.2 29 km (18 mi) SSE of Gardiner, MT
 1.8 2014/01/30 09:42:11 44.812N 110.535W 4.9 29 km (18 mi) SSE of Gardiner, MT
 1.4 2014/01/30 04:11:36 44.798N 110.537W 7.9 30 km (19 mi) SSE of Gardiner, MT
 2.0 2014/01/30 04:11:35 44.808N 110.530W 7.4 29 km (18 mi) SSE of Gardiner, MT
 1.8 2014/01/30 03:57:10 44.817N 110.533W 10.1 28 km (18 mi) SSE of Gardiner, MT
 2.4 2014/01/30 01:40:35 44.807N 110.522W 11.8 30 km (18 mi) SSE of Gardiner, MT
 2.2 2014/01/29 23:57:03 44.398N 110.615W 1.8 49 km (30 mi) SE of West Yellowstone, MT
 1.5 2014/01/29 23:43:29 44.405N 110.628W 1.9 47 km (29 mi) SE of West Yellowstone, MT
 1.3 2014/01/29 23:39:18 44.375N 110.636W -0.3 49 km (30 mi) SE of West Yellowstone, MT
 1.4 2014/01/29 23:33:12 44.401N 110.627W 2.3 48 km (30 mi) SE of West Yellowstone, MT
 1.5 2014/01/29 18:29:59 44.801N 110.544W 4.3 29 km (18 mi) SSE of Gardiner, MT
 2.3 2014/01/29 01:11:08 44.600N 110.153W -3.4 49 km (31 mi) SSW of Cooke City-Silver Gate, MT
 1.5 2014/01/28 04:39:47 44.815N 110.528W 7.3 29 km (18 mi) SSE of Gardiner, MT
 1.4 2014/01/27 19:44:29 44.747N 110.780W 6.2 27 km (17 mi) ENE of West Yellowstone, MT

In addition, as of about 4:00 PM MST today, the activity shown in the seismometers above **has quieted down a lot**. Not completely, but far closer to normal than not. We will continue to monitor the situation. Those of you in the western United States and southwestern Canada would do well to monitor it as well.

SOURCE INFO (Updated 2-3-2014 9:15 AM EST)

A verifiable source for our materials in this story can be found at:

<http://www.isthethingon.org/Yellowstone/details.php>

The link above provides LIVE access to the Borehole data we reported.

Archives of that Borehole (B944) Data are available for Feb. 1 at:

http://www.isthethingon.org/Yellowstone/wrapper.php?file=LKWY_SHZ_US_01.2014020100.gif

and for Feb. 2 at:

http://www.isthethingon.org/Yellowstone/wrapper.php?file=LKWY_SHZ_US_01.2014020200.gif

In addition, LIVE readings from ALL the boreholes are available at:
<http://www.isthistingon.org/Yellowstone/daythumb.php>

******* UPDATE FROM U.S. GEOLOGICAL SURVEY RESPONDING TO THIS STORY *******

YELLOWSTONE VOLCANO OBSERVATORY INFORMATION STATEMENT
Wednesday, February 5, 2014 10:26 AM MST (Wednesday, February 5, 2014 17:26 UTC)

YELLOWSTONE VOLCANO (VNUM#325010)
44°25'48" N 110°40'12" W, Summit Elevation 9203 ft (2805 m)
Current Volcano Alert Level: **NORMAL**
Current Aviation Color Code: **GREEN**

A story reporting abnormally strong earthquake activity in Yellowstone National Park has been circulating across the Internet over the last few days. In fact, earthquake activity in Yellowstone has been at normal levels for the past several months.

The story appears to be based on a misinterpretation of public "webicorders", which are graphics depicting seismic data, on the University of Utah Seismographic Station (UUSS) web site (UU operates the Yellowstone Seismic Network). A borehole seismometer called "B944", located near the West Thumb region of the Park, has been malfunctioning in recent weeks with strong bursts of electronic noise contaminating its data. These noise bursts appear as wild excursions on the B944 webicorders that can appear alarming to the inexperienced eye.

Along with providing regular monthly updates, the Yellowstone Volcano Observatory also releases topical information statements whenever truly abnormal activity occurs.

The Yellowstone Volcano Observatory (YVO) provides long-term monitoring of volcanic and earthquake activity in the Yellowstone National Park region. Yellowstone is the site of the largest and most diverse collection of natural thermal features in the world and the first National Park. YVO is one of the five USGS Volcano Observatories that monitor volcanoes within the United States for science and public safety.

YVO Member agencies: USGS, Yellowstone National Park, University of Utah, University of Wyoming, UNAVCO, Inc., Wyoming State Geological Survey, Montana Bureau of Mines and Geology, Idaho Geological Survey

CONTACT INFORMATION:
Jacob Lowenstern, Scientist-in-Charge
jlwnstrn@usgs.gov

TRN REPLY:
There is just one small problem with the explanation put forth by Jacob Lowenstern above: Other bizarre readings are also starting to occur at other seismic monitors in other locations at Yellowstone. Does a malfunctioning recorder displaying an increase in "noise" explain why so many stations surrounding that one are showing harmonic strong motion long waves?

From the 4th:

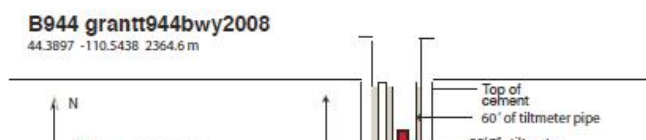
- [\[link to www.isthistingon.org\]](http://www.isthistingon.org)
- [\[link to www.isthistingon.org\]](http://www.isthistingon.org)
- [\[link to www.isthistingon.org\]](http://www.isthistingon.org)
- [\[link to www.isthistingon.org\]](http://www.isthistingon.org)

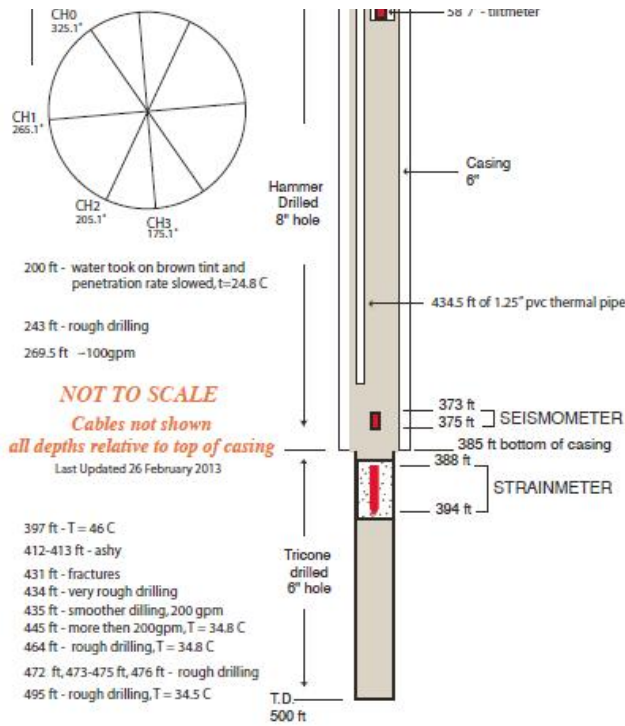
And continuing today:

- [\[link to www.isthistingon.org\]](http://www.isthistingon.org)
- [\[link to www.isthistingon.org\]](http://www.isthistingon.org)
- [\[link to www.isthistingon.org\]](http://www.isthistingon.org)
- [\[link to www.isthistingon.org\]](http://www.isthistingon.org)

Are they all broken too?

The fact that Mr. Lowenstern kindly revealed that the readings from Bore Hole B944 are "strong bursts of electronic noise" is interesting. How would strong bursts of electronic noise get to the seismic device which is positioned **375 feet** below ground level? According to engineering diagrams obtained by TRN, Bore hole B944 is constructed as follows:





Even the most advance ground-penetrating radar cannot get its electronic signal that deep! Yet Mr. Lowenstern would have us believe that something is managing to randomly affect sophisticated equipment at such a depth. Preposterous! Unless, of course, the strong bursts of electronic noise are deliberate attempts to CAUSE an eruption through the use of Resonance Energy Weapons?

We doubt the people engaging in such an endeavor would bother to tell Mr. Lowenstern they were trying to cause an eruption! Details of this apparent deliberate activity, using Resonance Energy Weapons for the purpose of CAUSING Yellowstone to erupt, can be read [HERE](#)

While we at TRN are glad the government responded to our story, we stand-by our report. It is our considered view that these events are NOT "strong electronic noise" but rather something far more serious – and DELIBERATE. We believe the public has a right to know.

If you would like to be alerted by e-mail about future news of this type or of RADIATION ALERTS as the radiation from the Fukushima Nuclear Disaster in Japan hits U.S. and Canadian shores, you can subscribe to our "ALERTS" e-mail service, free! This is *NOT* a discussion list; you will *NOT* be deluged with email and your email will *NEVER* be sold or rented to anyone. To sign-up, click [HERE](#)

< Prev Next >